

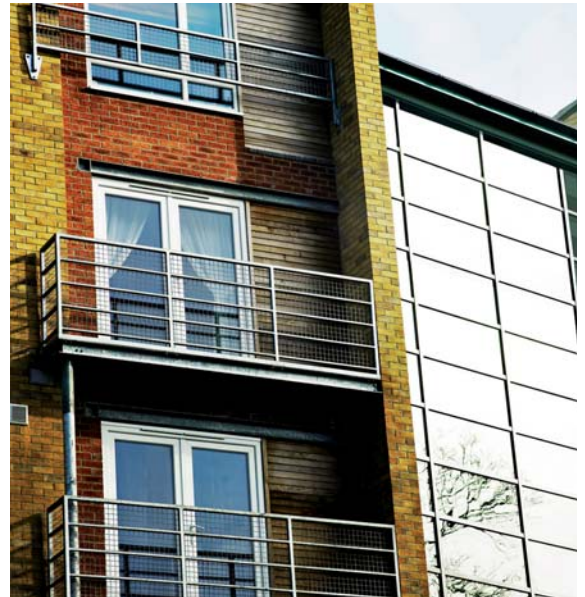


## Norfolk Park Sheffield

Places for People is leading a 10-year redevelopment programme for the Norfolk Park area of Sheffield.

Located within one mile of the city centre, this 1960s estate is currently undergoing a radical transformation involving the demolition of 2,600 homes and the construction of 1,200 new properties.

The 81-hectare site will eventually see the construction of 800 homes for sale and 400 for affordable rent. At the heart of the project is a drive to extend the range of tenure in the area and to widen opportunities for home ownership. A total of 228 homes have been completed so far – 125 for sale and 103 for affordable rent.



The project has also involved the refurbishment of 111 timber framed, flat roof properties. Residents living in these homes have benefited from new windows and doors, energy efficient boilers, roof covering insulation and attractive wall rendering.



Places for People is testing the use of solar thermal panels to provide hot water in four of the new properties. The panels have been fully integrated into the roof construction rather than sitting on top of it.

Guildford Grange, an award-winning £4 million Extra Care complex for older people, has also been developed. It provides 70 homes for people aged over 55 – with a care and support service available for 40 residents and an emergency pull cord system for the remaining 30 residents. There are also shared facilities including lounge, gym, laundry, hairdresser and restaurant.

In 2004 Guildford Grange won a National Home Improvement Council award.